

JUAN PATRICIO

70 metre, Fast, Fuel efficient, Freight capable K Class Catamaran



FOR SALE

www.JuanPatricioFerry.com

JUAN PATRICIO

Juan Patricio is a K55 Class catamaran designed by Advanced Multihull Designs (AMD) and built by the world-renowned Incat Tasmania shipyard.

Incat Tasmania is famed for pioneering the development of the large high speed ferry sector. Following the delivery of the first twelve Incat wave piercing catamarans, ranging in length from 74-78 metres, ferry operators in the Far East and South America sought even faster, yet more economical, vessels that could compete more effectively with air, land and sea transport infrastructure in coastal waters. The K Class catamaran targeted this market niche with the design specifically optimized to ensure maximum fuel efficiency and speed at any given deadweight.

As clear evidence of the success of this timeless "maximum fuel efficiency" design philosophy, **Juan Patricio** reached speeds of 53.8 knots during sea trials using only 21.6 MW of propulsive power!

Juan Patricio remains one of the fastest and most economical high speed vehicle ferries in the world. In highly cost effective operational service today Juan Patricio operates at speeds of 38-42 knots whilst carrying a mix of passengers, vehicles and freight.

Since delivery, **Juan Patricio** has proved to be an enormously successful ferry offering unsurpassed comfort, speed, reliability and economy. The employment versatility of **Juan Patricio** becomes readily apparent when it is considered that it is operated on two primary routes that vary greatly in length:

- Buenos Aires, Argentina to Montevideo, Uruguay - 110 nautical miles
- Buenos Aires, Argentina to Colonia, Uruguay - 27 nautical miles

Juan Patricio is built to Det Norske Veritas (DNV) Class with the notation DNV +1A1 HSLC R4 Car Ferry "B" EO. Aside from speed and economy some other key features of the **Juan Patricio** include:

- Shallow draft (2.1 metres)
- Separate food and beverage facilities in First and Economy Class
- Large duty free shop with three (3) cashier points
- Highly maneuverable
- Passenger cabin consisting of First and Economy Class
- Aft vehicle deck capable of carrying trucks and oversized vehicles
- Fast port turnaround (load & unload)
- Fast acceleration to service speed



Exclusive vessel re-marketing by Maatsuyker Limited, 17 The Esplanade, St Helier, Jersey JE2 3QA, UK Channel Islands

Phone: +44 7931 907623 or +44 7983 591847 Skype: high.speed.boat Web: www.maatsuyker.com

All details and specifications are believed to be correct however no guarantee of accuracy is provided.

JUAN PATRICIO

PRINCIPAL PARTICULARS

Vessel type:	K Class Catamaran
Shipyard:	Incat Tasmania (Hull 036)
Designer:	Advanced Multihull Designs / Incat Tasmania
Class:	Det Norske Veritas DNV+ 1A1 HSLC R4 CAR FERRY B E0
Flag:	Argentina
Build year:	1995
GRT:	1760

Dimensions

Length:	70.76 metres
Length waterline:	63.90
Beam:	19.46 metres
Draft:	2.10 metres

Performance

Range:	360 nautical miles (665 km) @ 44 KN
Speed / Consumption:	
Ultra high speed:	48 knots (89 km/h) / 100 litres per nautical mile (4 x 950 rpm)
High speed:	44 knots (81 km/h) / 90 litres per nautical mile (4 x 900 rpm)

Capacities

Total Persons:	450 (excellent panoramic views)
First Class:	94 persons in luxury seats
Economy Class:	356 persons
Cars:	50
Cargo:	19.2 metre long aft vehicle without height clearance restrictions

Propulsion

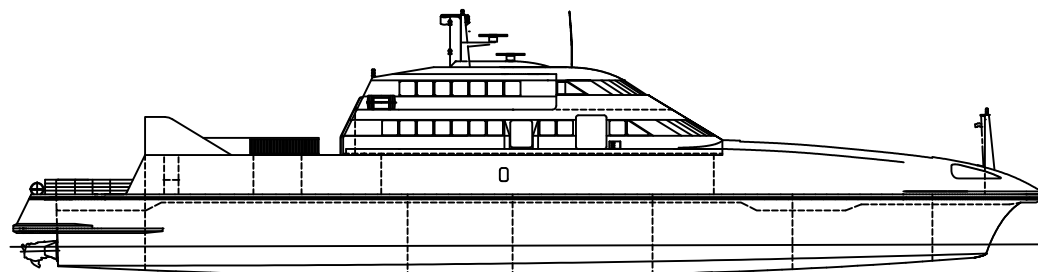
Engines:	4 x Caterpillar 3616, rated 5400 KW @ 1000 rpm
Waterjets:	4 x Kamewa 80 (2 x reversible & steerable + 2 x booster)
Gensets:	2 x Caterpillar 3306, 3 phase, 380 V, 50 HZ, 145 kW
	1 x Caterpillar C9
Ride control:	2 x active Maritime Dynamics trim tabs

Other Equipment

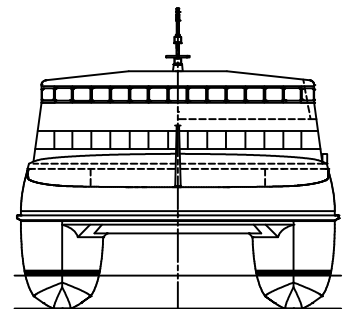
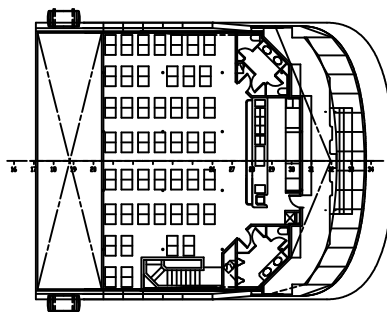
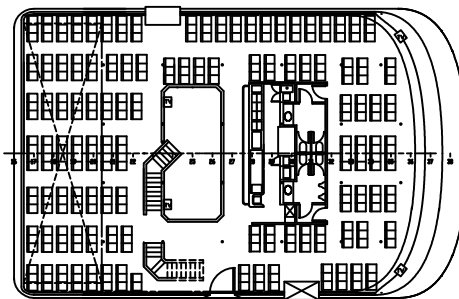
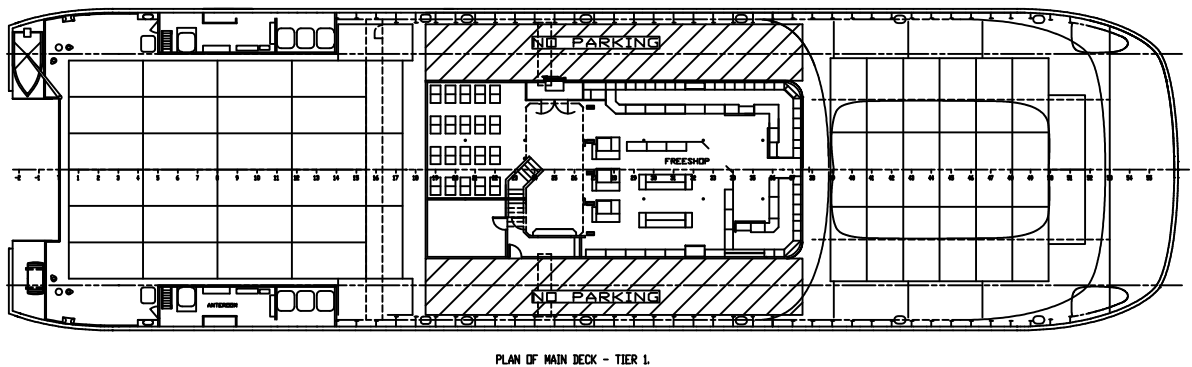
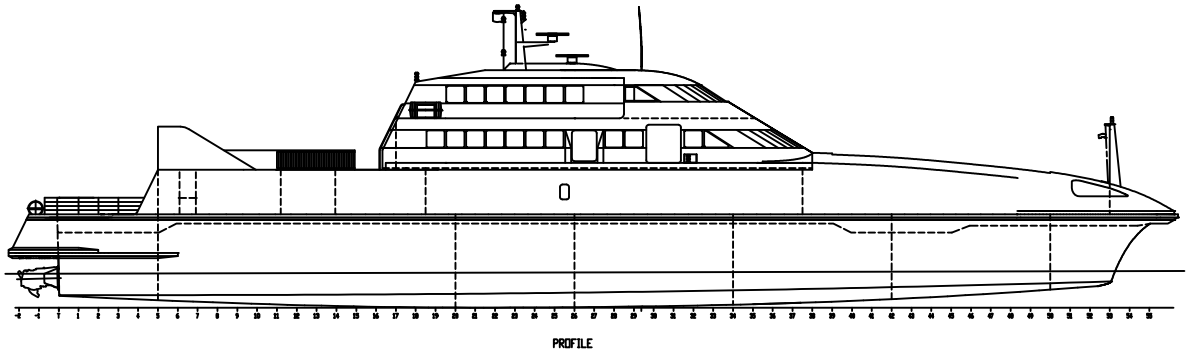
Lifesaving:	MES (Liferaft Systems Australia) 128 man liferafts (Liferaft Systems Australia)
Bridge equipment:	2 x radar Furuno FAR-21X7 2 x radar responder Samyung SAR-9 5 x VHF ACR 2726 AIS - Samyung SI-30 Giro compass - Anschutz standard 20 Plus with TMC. Auto pilot - Robertson AP9MKII Electronic Chart System Kelvin Hughes R-501 GPS - SI-TEX Colormax Wide Sounder - Furuno LS-4100 GMDSS VHF - JRC JHS 32 A 2 x VHF Kelvin Hughes Husun-2048 HF & UHF Kelvin Hughes Husun-2100 Navtex - Furuno NX-500 ISIS 250 Machinery Monitoring Kamewa central console + 2 wing stations for docking

Fire detection/alarm system:

Global Fire Equipment
CCTV system for fire surveillance of engine rooms & car deck
CO2 engine room fire control
Car deck sprinkler system



GENERAL ARRANGEMENT



PRINCIPAL DIMENSIONS	
LENGTH OVERALL	78.36m
WATERLINE LENGTH	63.90m
BEAM OVERALL	19.46m
HULL BEAM	5.00m
HULL WIDTH	5.62m
DRAFT OVER	2.14m

© 1988-2004 US INTERIOR SPACES RESEARCH PVD MUST ASKED			
21 10-11-24 21 10 11 24 21 10 11 24			
10-10-84 (A) 10 10 84 10 10 84			
21 10 11 24 21 10 11 24 21 10 11 24			
YARD NO.	036	PHASE	
TITLE	KCS CATAMARAN FERRY PRELIMINARY GENERAL ARRANGEMENT FOR BULGARIAN	DESIGNED BY	DATE 11/100
OWNED BY		APPROVED BY	DATE
DRG. No.	036-09-32-001	REV.	P